



The Uvitron SunBelt 25 is a high power wide width light curing conveyor system, designed for high volume production or laboratory processing of large parts. The system features a high output arc lamp powered by a compact programmable electronic power regulating ballast. The conveyor has a quiet variable speed motor, with a velocity regulating drive that keeps the belt speed constant for varying loads. The conveyor has a long enclosed light chamber with entrance/exit light guards for maximum light shielding. The belt-to-lamp height can be easily adjusted for improved compatibility with varying part sizes.

FEATURES

+ High Output Lamp Head with Forced Air Cooling

The lamp head contains a 25 inch arc length, 10,000 Watt metal halide type lamp, which emits focused UVA, UVB or visible light from its elliptical reflector. Dual integrated cooling blowers insure long lamp life.



+ Lamp Power Regulation

The system's electronic switch mode ballast maintains constant lamp power regardless of variations in AC line input or lamp voltages. This regulation provides for repeatable curing times and longer lamp life.

+ Adjustable Lamp Height

Curing chamber handles and locator pins allow for easy adjustment of lamp height from 2 to 10 inches, which provides perfectly repeatable settings of lamp head to belt distance for various part sizes.

+ Full UV Shielding

The conveyor light chamber is totally enclosed, shielding the operator and passer-bys from any UV light. The curing chamber entrance and exit are protected by adjustable height light guards that minimize any light leakage.



+ Convenient Front Mounted Controls and Indicators Panel

The control panel features Lamp Enable & E-stop switches, AC Power, Lamp Ignited, Lamp Ready & Alarm indicators as well as a lamp hour meter and USB programming connector.



+ Regulated Belt Speed Controller

A variable frequency drive with digital speed readout is used to adjust and regulate conveyor belt speed up to 58 feet per minute, allowing for repeatable product exposure time and curing dose.



+ Performance

Belt speed = 3–58 ft/min, lamp intensity = 1500 mW/cm² UVA max peak intensity at 2 inch lamp height, lamp energy = 5.0 J/cm² at 5 ft/min

+ Exhaust Blowers and Port

The curing chamber has 3 blowers mounted below the belt for evacuating heat and any product vapors. The outlets of these blowers are ducted to a rear mounted port for venting to facility exhaust systems.



+ Adjustable Mounting Feet

The system has four adjustable mounting feet for setting system height and to allow leveling on irregular floor surfaces.

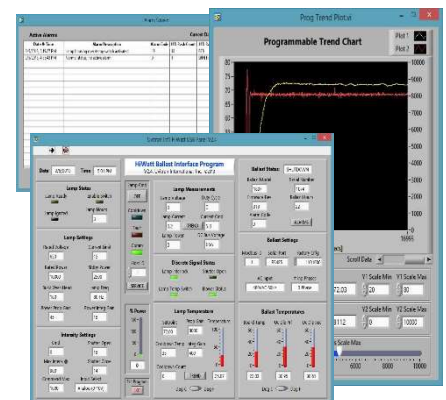


+ In-feed Product Guides

Dual angled guides at the entrance side of the conveyor's 33 inch wide belt insure that products being cured are directed into the 25" lamp cure zone. For larger products that only require center curing, the guides can be removed.

+ Lamp Ballast Programming Software

The system includes graphical interface software for monitoring curing system performance, diagnosing system alarms, and for programming of lamp output power.



+ Dimensions

100 inch total length, 57 inch curing chamber length, 45 inch width, 60 inch overall height, 33 inch belt width, 25 inch maximum cure width.