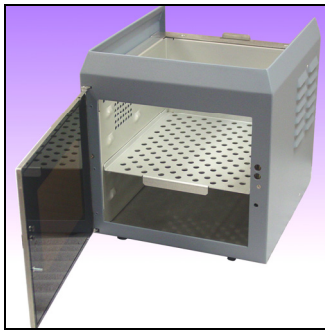




Rayven Light Curing Oven P/N UV1080

New

This fully enclosed curing chamber features 360 degree shielding for maximum UV protection. The Rayven includes a door interlock which when used with the IntelliRay system, automatically causes the unit's shutter to close when the door is opened. Dual rear panel D-sub connectors allow pass thru of IntelliRay control signals for use with a PC, PLC, shutter control foot pedal, external interlock, etc. The oven also has an adjustable height curing tray which allows for 5 repeatable curing distances. Just place your IntelliRay or SunRay on top of the oven and start curing - *no tools required.*



Specifications:

Category	Parameter	Value	Conditions/Notes
General	Model	RAYVEN Curing Oven	
	Part Number	UV1080	
	Cooling	Forced air w/ louvers	Channeled from lamp head
	Interconnect Cable	Dual 15 position DSUB	Male/Female, 2.5 ft.
Dimensions			
H x W x D (inches)	Inside	9" x 9" x 10.25"	w/ adjustable shelf
	Outside	11.5" x 11.25" x 12"	D= 12.75 w/ door knob
	Weight (lbs.)	11 Pounds	Without lamp head
Cure Distance (inches)	Shelf Positions	2", 3.75", 5.5", 7.25"	Bottom of lamp to shelf
	Distance to floor	9"	Bottom of lamp to floor

Uvitron International, Inc. • 380 Union Street • West Springfield, MA 01089 USA • (413) 731-7835

Web Site: <http://www.uvitron.com/> • Email: info@uvitron.com

All specifications contained herein are preliminary and subject to change without notice