

INTELLIRAY 400/600 SOFTWARE INSTRUCTIONS

The IntelliRay is a microprocessor-based light curing system, which features an RS232/RS485 serial port for applications requiring remote control of curing operations. The enclosed CD ROM contains the installation files required for remote control of the IntelliRay via a Microsoft Windows™ equipped personal computer. Below is a list of instructions that may aid you in the installation and operation of your IntelliRay curing system interface software.



Software Installation

Follow the software installation instructions printed on the face of the CD ROM disc. The installation program will prompt you through a two-part procedure for loading of the required software files. The first portion of the installation loads the Uvitron software program, and the second loads a National Instruments run-time engine required for execution of the IntelliRay program.

Hardware Setup

Before launching the newly installed program, complete the following steps to configure the IntelliRay unit(s) for remote operation:

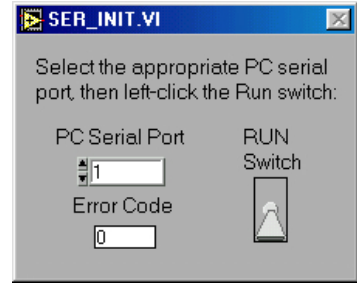
1. Turn off the input power switch at the rear of the IntelliRay system, and also turn off the power to the computer.
2. Connect the male 15-pin connector end of the supplied remote communication cable to the rear panel female DSUB connector of the IntelliRay lamp head. Connect the opposite end to an available serial port on your PC. (For wiring information of an RS485 connection, refer to the connector pin descriptions table of the External Interface section of the IntelliRay Instruction Manual).

NOTE: The IntelliRay is compatible with both RS232 and RS485 serial communication protocols. For single lamp head installations requiring a cable length of less than 25 feet, RS232 can be used. For longer distances or multi-drop network connection of up to 8 lamp heads, the RS485 protocol is required. The RS232 Remote Interface Cable (UV00000525) and the RS485/Logic Remote Interface Cable (UV00000526) are available in 15-foot standard lengths. Contact the factory for cables of other required lengths.

3. Turn power back on to both the IntelliRay and computer systems.

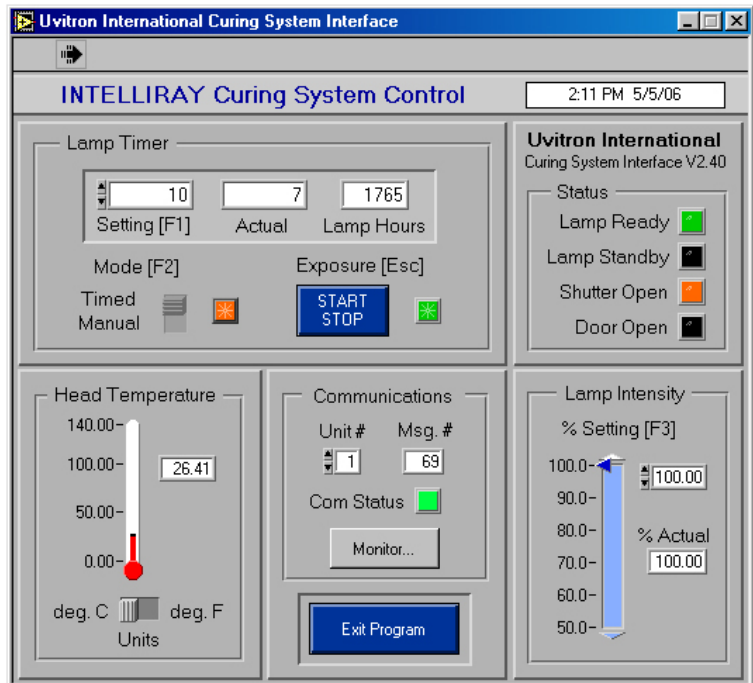
- Using the keypad on the IntelliRay front panel, enter the Setup Menu (refer to Using Menus in the System Operation section of the IntelliRay manual). Verify that the COM port is set appropriately to RS232 or RS485, and that the COM Port Unit ID is set to "1" (to match the default ID setting of the curing system interface program). If RS485 is used, set the unit ID of any additional units to unique values to allow each to be addressed individually by the control program.
- Launch the newly installed IntelliRay software from the Windows Start/Programs menu (the shortcut can be found under the *Uvitron Software* program group).

- The program will initially open a SER_INIT dialog box (see photo), which prompts the operator to select which computer serial port to use. Select the appropriate port number using the small up/down arrows next to the port selector control, then left-click the Run Switch (or press the computer keyboard Enter key).



NOTE: If an error message is displayed, or a non-zero error code appears in the SER_INIT dialog box, then the selected PC serial port may either be disabled in the computer BIOS, or it may be allocated by another device (such as a modem). If this occurs, re-enable the port in the computer's BIOS setup utility, or select a different port (moving the communications cable to the appropriate port connector if necessary).

- Once communication is established between the PC and the curing system, the displays on the program's main screen will begin to update, and the Com Status indicator will turn green (see photo). The program's Communications panel Msg # should increment a few times a second (displaying the rate of serial data packet exchanges). If multiple units are connected using RS485, the main screen's Unit # control can be used to select which of the curing systems is being controlled.



Monitor and control of the IntelliRay curing functions should now be possible using the controls of the interface program's main screen.

Using Software Controls

Software control of the IntelliRay is relatively simple, and is very similar to operating from the unit's front panel keypad. If questions do arise, online descriptions of the program's controls and indicators are available by right-clicking them, and selecting "Description and Tip" from the pop-up menu. For short descriptions, the mouse pointer can be "hovered" above any control, and the online tip will be displayed.

The program's digital controls can be differentiated from data readouts by their adjacent up/down arrow buttons. Values can be adjusted in these controls by either left-clicking the arrows to increment or decrement the value, or by double-clicking the current value, and entering a new value. The most often used controls also have keyboard shortcuts (shown in brackets in the control's name). By pressing the appropriate shortcut key, the particular control can be activated without having to navigate using the computer's mouse.

Software Uninstall

If for any reason the IntelliRay software must be removed from the host PC, the programs can be uninstalled using the following procedure:

1. Click the Start button, and then choose Settings and Control Panel.
2. Double-click the Add/Remove Programs icon.
3. Select IntelliRay Interface Program from the list, and click Add/Remove.
4. Follow the prompts to remove the Uvitron software.
5. Repeat the procedure, and this time select NI LabVIEW Runtime Engine. Click Add/Remove to uninstall the National Instruments software.

Support

If any further assistance is required, contact Uvitron Customer support at the number shown below, and a representative will be glad to assist you.

Uvitron International, Inc. · 380 Union St., Suite 20 · West Springfield, MA 01089 Phone (413) 731-7835 · Fax (413) 731-7767 · Internet http://www.uvitron.com/

DATA IN THIS MANUAL IS SUBJECT TO CHANGE WITHOUT NOTICE